

NEW *Leaf*

Smart design choices and a sophisticated palette ensure this compact Sydney terrace feels alluringly spacious and timeless.

STORY *Chris Pearson* | STYLING *Tess Thyregod*
PHOTOGRAPHY *Pablo Veiga*



LIVING Walls painted Dulux Vivid White and trims Dulux Ghosting. *On the Side of Warmth* artwork by Claudia Bagnall. Console and coffee table, both Anibou. Vintage vase, Lunatiques. Kelly Wearstler chandelier, Bloomingdales Lighting. Blind, Master Workroom. 'Sabrina' sofa, Zuster. Brass tray by Michael Verheyden, Becker Minty. De La Espada side table, Spence & Lyda. Ochre and grey cushions, Montmartre Store. Khaki cushion, Jardan. Burgundy cushion, Greg Natale.

“Every nook and cranny is used for extra storage. We also created the illusion of space with generous light.”

LYNNE BRADLEY, INTERIOR DESIGNER

DINING Kelly Wearstler chandelier, Bloomingdales Lighting. Dining table, King Living. Artek chairs, Anibou. *A Knot Intertwined in Eternity* artwork by Indivi Sutton, Saint Cloche. Caroline Blackburn Ceramics vase. Cup by Kazuya Ishida, and dish by Tetsuya Kowari, both The DEA Store. Floorboards in Argento, Tongue & Groove. **LIVING** Fireplace in Dulux Venetian Plaster in Concrete Stucco Light Grey. *The Green River II* artwork by Indivi Sutton, Saint Cloche. Arabescato Corchia marble, Granite and Marble Works. Caste Design lamp, Freeman Gallery. Rug, Designer Rugs.



Heidy Jameel, the owner of this terrace in Sydney's east, has a fresh juice cleanse business. In 2021, after raising three children here, she wanted to give her home its own invigorating pick-me-up. The result? Pure, timeless style, with longevity guaranteed.

She and her husband, Mark, bought the home in 2005. It had an asset few terraces possess - a non-party wall along one side, which, although south-facing, ensured light throughout the living areas. Despite that, the house had serious failings.

"We had refreshed the kitchen and bathrooms over the years, but the layout did not make full use of the space," says Heidi. "As we are a clutterless family, we wanted it clean and easy with everything having a purpose. We also wanted to make use of the attic and create a basement level." With two of their grown-up children, Lila, now 18, and Jack, 20, living at home, it became pressing for them to have their own spaces with ensuite bathrooms.

The couple enlisted interior designer Lynne Bradley of Lynne Bradley Interiors and architect Eyal Snehor of Novam Design Studio to streamline their home with a revitalised floor plan, together with new fittings, finishes and furnishings.

First up, they ventured into the attic to provide a bedroom for Lila, where an ensuite was snuck in under the tiled roof. Then they went into the basement to include a laundry and wine cellar. And moving the stairway to the party wall opposite while shifting the laundry downstairs loosened up the open floor plan. Now one continuous space, there is a sitting area at the front, formal dining and then a spectacular kitchen with an informal meals area beside it, all with generous light.

"It's a large kitchen in a small space and the banquette, with its generous storage underneath, makes it seem larger than it actually is," says Lynne. "Every nook and cranny is used for extra storage. We also created the illusion of space with generous light." And a few other smart tricks, too. ▶



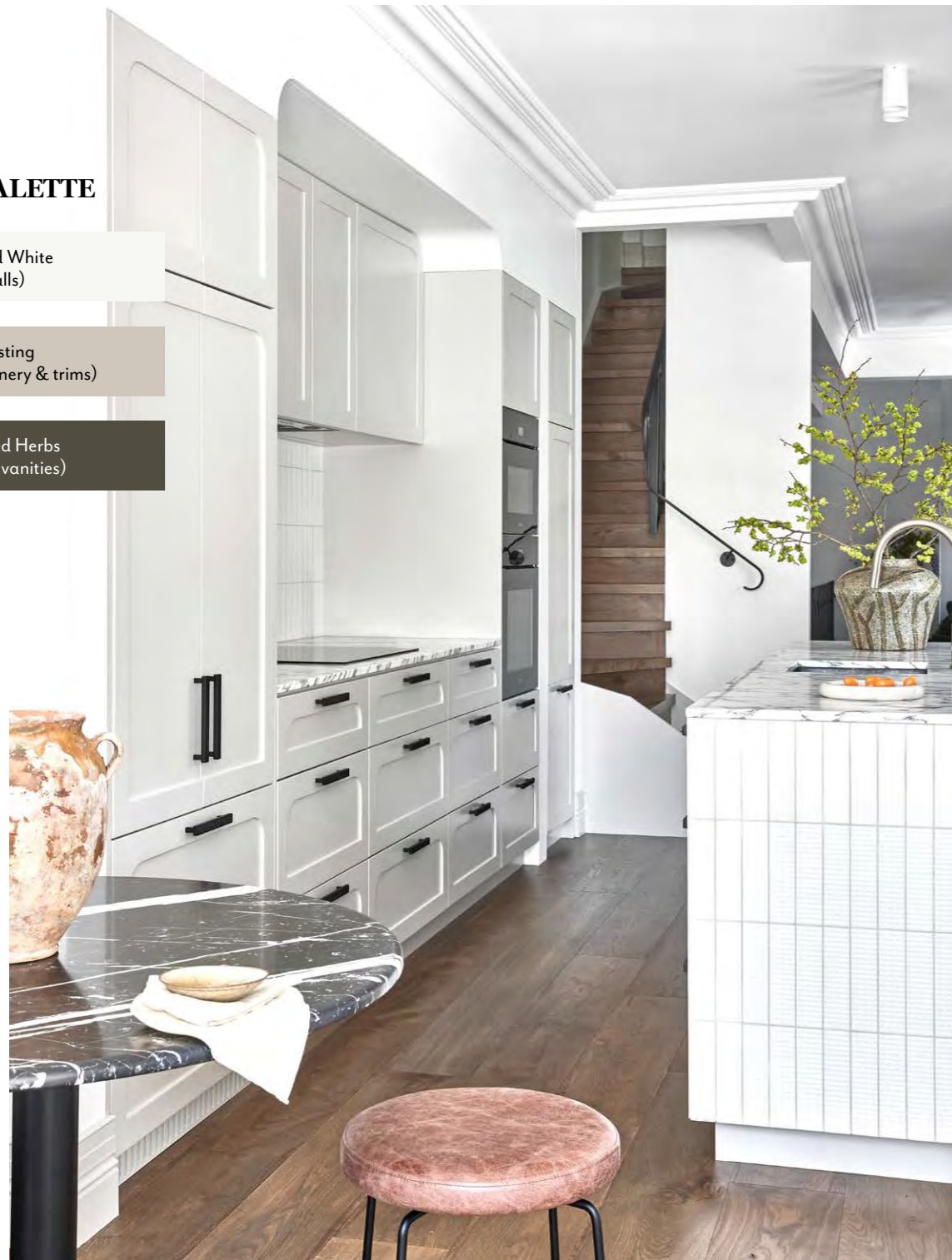
KITCHEN Joinery in Dulux Ghosting, Interex Custom Joinery. Benchtop, Granite and Marble Works. Miele ovens, Winning Appliances. Vase by Timna Taylor, The DEA Store. Bowl by Donna Green, tea bowl by Kati Watson, *Solemn Pillar* by Kirsteen Pieterse, all Utopia Art. **DINING** Anour wall lights. Artwork by Graziela Guardino. Backrest in Pelle Leathers 'Nevada' leather. Seat in Mokum 'Grande Boucle' by Catherine Martin. Joinery in Polytec Black Wenge. **CELLAR** Wine racks, MacPhee's. Chair, Friends and Founders. Side table, Swedese. Floor tiles, Di Lorenzo Tiles.

THE PALETTE

Dulux Vivid White
(interior walls)

Dulux Ghosting
(kitchen joinery & trims)

Dulux Mixed Herbs
(bathroom vanities)



KITCHEN Joinery in Dulux Ghosting, Interex Custom Joinery. 'Biscuit' tiles in Bianco, Di Lorenzo Tiles. Benchtops in Arabescato Corchia marble, Granite and Marble Works. Smeg cooktop, and Miele ovens, all Winning Appliances. Joinery pulls, Momo Handles. Brodware 'Yokato' kitchen mixer, Reece. 'Pillar' dining table and 'Diiva' stool, both Grazia & Co. 'Grande' floorboards in Argento, Tongue & Groove. *On table* Confit pot, Parterre. Dish by Brett Stone, Utopia Art. *On island* Tree Lines vase by Timna Taylor, The DEA Store. Pneuma 'Heavy Object-01' dish, Great Dane. **LANDING** Balustrade, Horizon. *Obiecti VIII - Object 8 "Parte Profile" Side Profile* sculpture by Max Rixon, Albus Lumen. *I'm Darkness, I Will Find My Way* artwork by Peter Summers, Studio Gallery.

Paint colours are reproduced as accurately as printing processes allow.

In the living room, white painted walls, Venetian plaster on a slick, contemporary fireplace and a marble mantel bounce light and create textural contrasts, while the rounded profile on the kitchen joinery "creates depth, interest and a sense of scale", enhanced by the island with its textured tiles, which bring out the veined marble benchtop. "In the bathrooms, the contrasting raised pillow and flat tiles give the illusion of scale," says Lynne. Those tiles embody the intriguing interplay between curved and straight lines throughout, evident in the kitchen and bedroom joinery, balustrading and the custom sofa in the front room, as well as the faithfully reinstated period skirtings, cornices and architraves. "We rounded off a doorway and these subtle curves became a recurrent theme," says Lynne. "The property was quite angular, so we softened the edges."

For the palette, Heidi favoured clean, crisp whites and greys, inspired by nature, which Lynne complemented with pops of forest green and bronze that team neatly with the timber floors. The result is an embracing, revitalised home with plenty to love. "I am especially proud of the kitchen," says Lynne. "I experimented with the door panel style. It's all ergonomic, with a slimline island that's texturally interesting, creating a focal point, with the banquette creating great usability." "We love that open-plan kitchen," adds Heidi, who clearly appreciates its combination of form and function. "And the master bedroom and bathroom are like a high-end, boutique hotel." ▶ *Lynne Bradley Interiors: lynnebradleyinteriors.com.au. Novam Design Studio: novam.com.au. Horizon: horizonbuilt.com.au.*



THIS IS THE LIFE

"Every inch of the house gets used, day in and day out," says Heidi. "We love to entertain and the built-in barbecue and outside deck make this easy to do." But the home is also geared to precious me-time when the guests have gone home. "We have also installed an ice bath and sauna on the lower deck, which we use as our own personal wellness retreat," she adds.

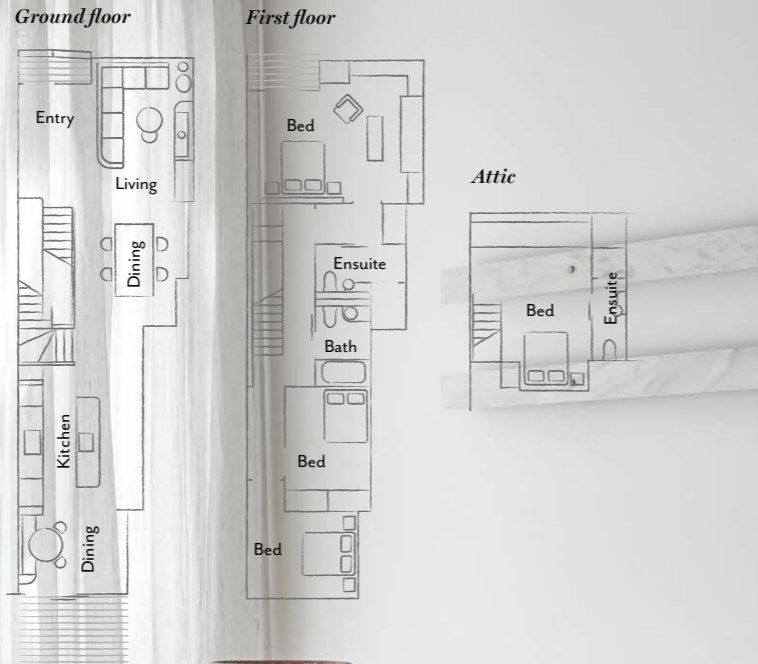


LILA'S BEDROOM *Top* Vanity in Dulux Mixed Herbs. 'Esme' basin, ABI Interiors. Artwork by Peter Summer, Studio Gallery. Society Limonta bed linen, Ondene. Cushions, Bonnie and Neil, and Jordan. Blind, Master Workroom. **MAIN BEDROOM** *Below* Joinery in Phillip Jeffries Vintage Weave, Interex Custom Joinery. Handles, Lo & Co Interiors. Chair, Freeman Gallery. Articolo light. *Art, from left: In Conversations* by Leanne Xiu Williams. *Infito Nymph Blue* by Guido Deleu. Sculpture by Giorgia McRae. *Linear Wave #05* by Tan Arlidge. **ENSUITE** *Opposite* Vanity in Dulux Mixed Herbs, Interex Custom Joinery. Arabescato Corchia marble, Granite and Marble Works. Tiles, Di Lorenzo Tiles. Handles, Noble Elements. Basin, ABI Interiors. Sculpture by Thomas Bucich, Becker Minty.



DINING Joinery in Polytec Black Wenge. Anour wall lights, Fred International. Backrest in Pelle Leathers 'Nevada' in Buffalo. Seat in Mokum 'Grande Boucle' by Catherine Martin in Silk. Table and stool, both Grazia & Co. Pot, Parterre. Jug by Shino Takada, The DEA Store.

THE LAYOUT



THE SOURCE

Bring an air of understated elegance to interiors with a selection of classic pieces in neutral tones.



Produced by Sophie Wilson.

1 Ralph Lauren Home 'Cara' Sculpted table lamp, \$1990, The Montauk Lighting Co. 2 LMC twin-border rug, POA, Cadrys. 3 De La Espada 'Handle' side table in Walnut, \$3040, Winning Appliances. 4 'Mama' vase with handle, \$750, Katarina Wells Ceramics. 5 'Issho' dining table in Smoked Oak, \$4090, King Living. 6 Lola James Harper 'The Woody Office of Daddy' candle, \$85, Libertine Parfumerie. 7 Helle Mardahl 'Mega' glass cake stand, \$2259, Net-A-Porter. 8 De La Espada 'Laurel' side table in Marble, \$5947, Winning Appliances. 9 Luxury velvet cushion in Khaki, \$79, Aura Home. 10 Aura Home 'Waffle' bath sheet in Natural, \$79.95, Kate Nixon Store. H&G